

Winter Kaleidocycle

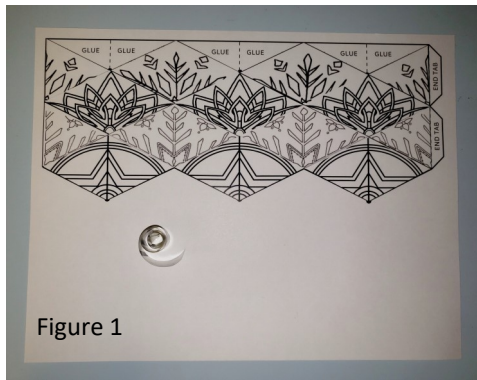


Figure 1

Included in your kit are:

- * 1 printed cardstock sheet
- * Glue dots

You will need to supply:

- * Scissors
- * Colored pens, pencils, etc.
- * Bone folder, ruler, or something to form creases

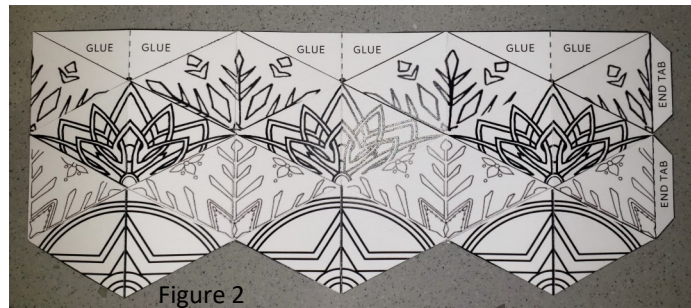


Figure 2

Cut out the ornament along the outer edge (Figure 2). Do not cut along the dotted lines.

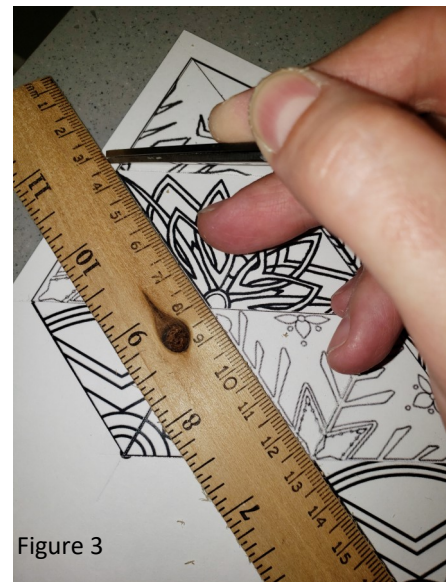
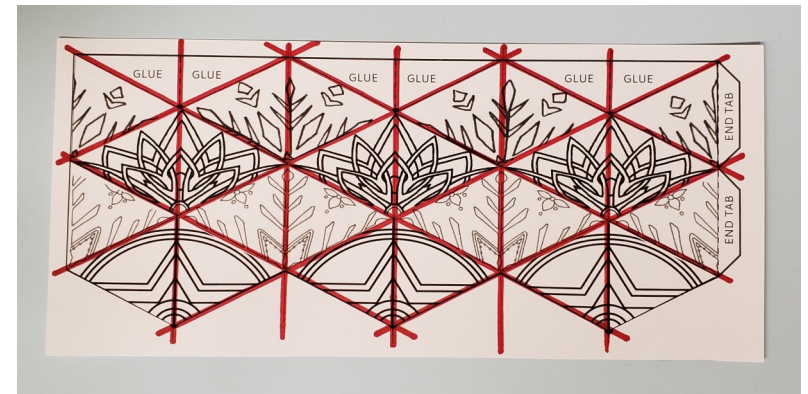


Figure 3

Use a pair of blunt scissors, pen, or other object to score all of the vertical and diagonal fold lines on the printed side of the ornament (Figure 3). The fold lines are marked in red in Figure 4 on the next page.



Fold at all of the scored lines using a bone folder, ruler, or other hard object to make sharp creases (Figure 5). Flip the ornament over and fold along the same lines, but in the opposite direction as in Figure 6. Once done, the ornament folds should be fairly flexible.



Figure 5

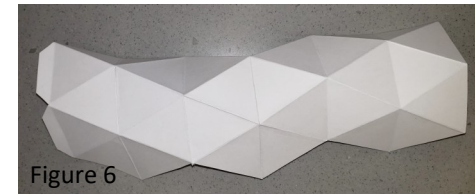


Figure 6



Figure 7

Color the ornament as desired, keeping in mind the patterns in each row will match up when the ornament is folded.

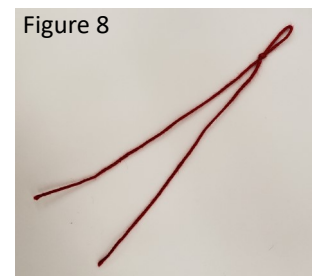


Figure 8

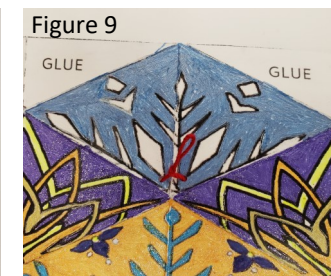


Figure 9

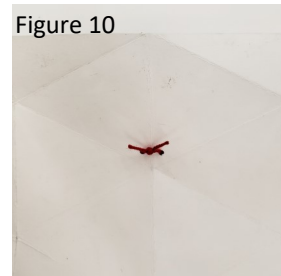


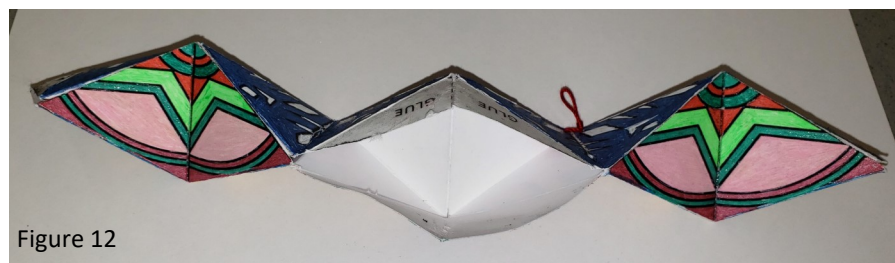
Figure 10

This step is optional only if hanging is desired:

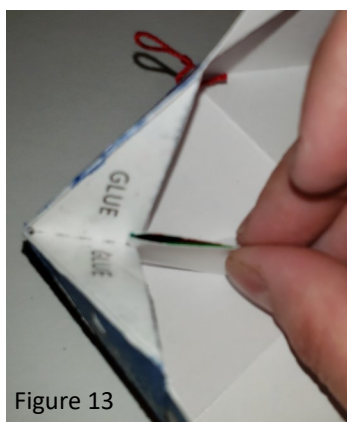
Fold the twine in half and knot so there is a small loop at the end (Figure 8). Thread each end through one of the holes punched in the ornament (Figure 9). On the backside of the ornament, knot the ends close to the paper, leaving enough slack so that the paper can bend freely (Figure 10).



Place glue dots at the 2 right triangles at opposite ends of the ornament, using the red dots in Figure 11 as a guide.



Carefully match up the edges of the glue area with the outer edges of the ornament on either end and press to seal the glue dots as shown in Figure 12.



Glue the middle section of the ornament in the same manner. It is helpful to pinch the ornament sections together along the fold line and tuck the glued triangle behind to line up the edges (Figure 13).



Place a glue dot at either end of the glue tabs and one in the middle as shown in Figure 11. Carefully bring the ends of the ornament together, tucking the tabs inside and under the opposing triangle (Figure 14).



Carefully press in on the center of the ornament to rotate through the various patterns. If hanging is desired, clip an ornament hook to the small twine loop.



Your ornament is ready for hanging.

Don't have a kit or want to make more? You will need:

- * 1 sheet of cardstock printed with the ornament pattern (downloaded from the calendar page on limalibrary.com or search "kaleidocycle" on the internet).
- * Glue
- * 1 piece of twine and mini hole punch, if hanging
- * Scissors
- * Colored pens, pencils, etc.